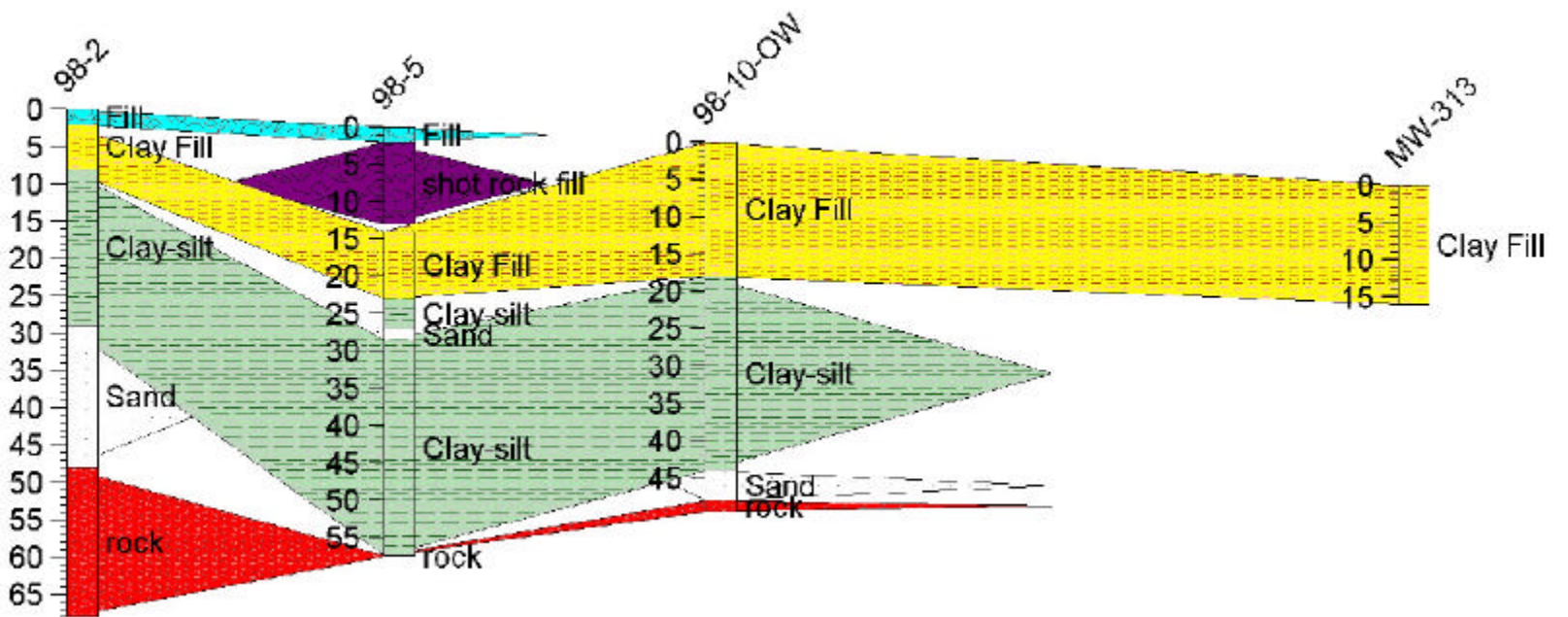
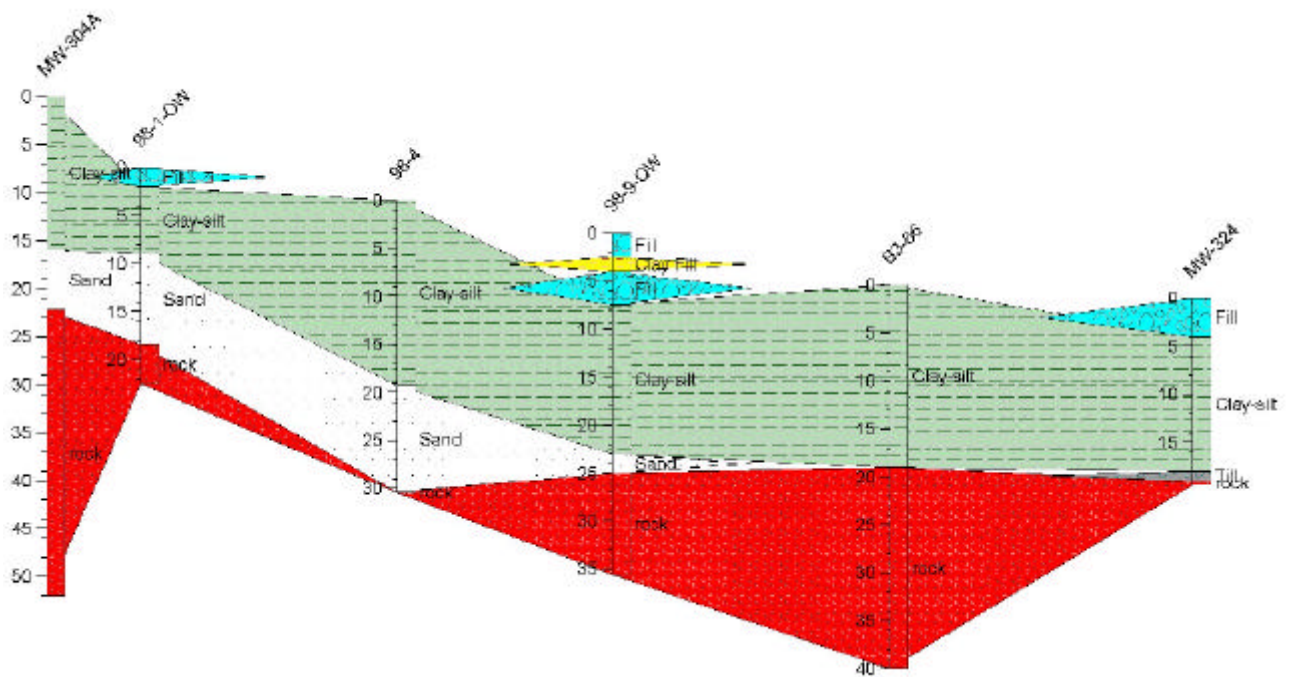


These geologic cross sections are linear interpolations between data points, based on a variety of RCRA and historical borings and testpits. See the legend on Figure 3-3 for an explanation of the surficial units. For each data point, the ground surface is that which existed at the time of the exploration and may have changed since then. Numerous different investigators have prepared the historical exploration logs and the interpretation of the bedrock surface has generally been taken equal to the elevation of "refusal" where noted. Not all historical explorations were accurately surveyed. Large areas of the site have sparse density of exploration points. The bedrock surface has been found to vary widely over short distances. "Fill" material may contain a wide variety of materials. Therefore, this map should not be relied upon for the planning of construction activities.

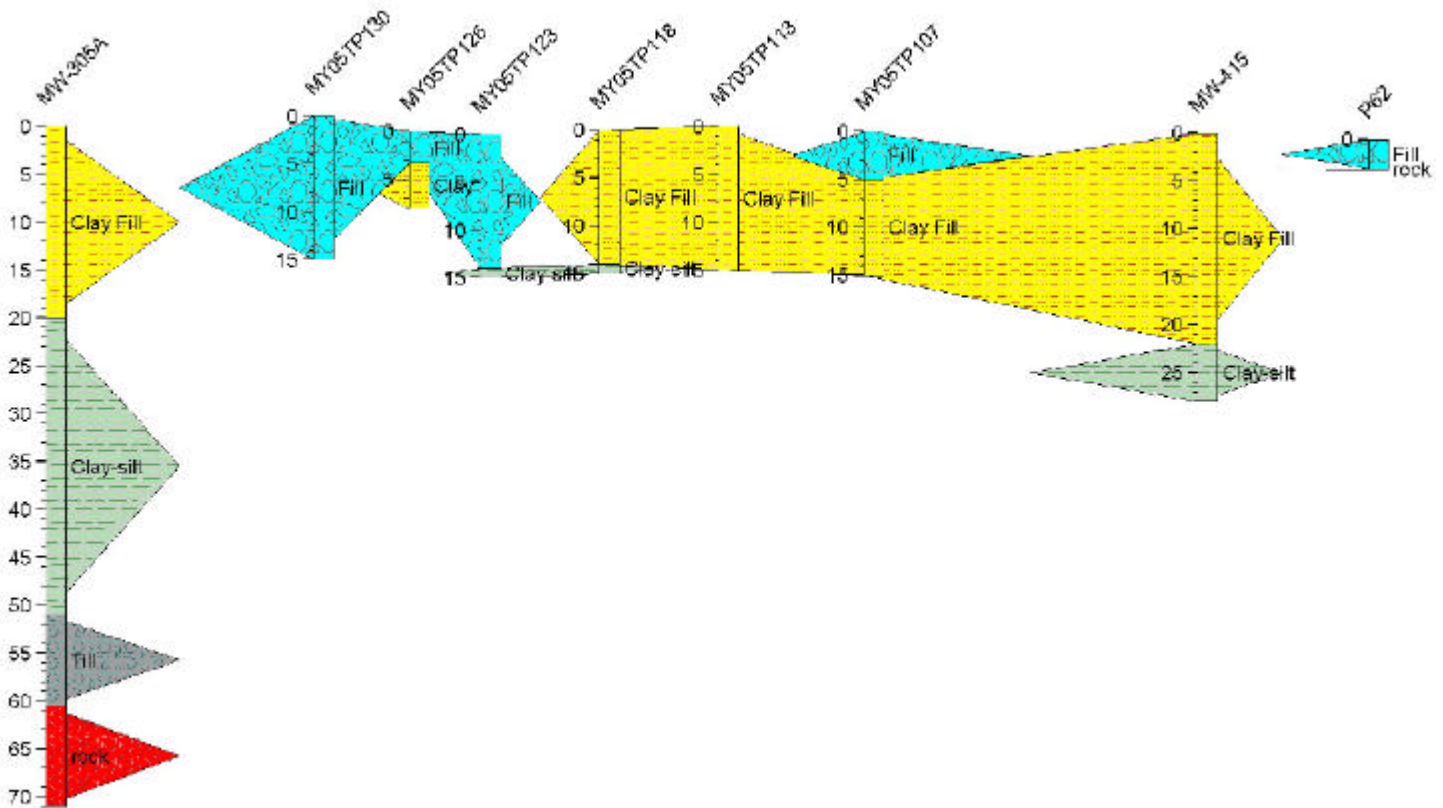
**CROSS-SECTION
14-14'
NORTH - SOUTH
THROUGH EAST
SIDE OF ISFSI**

HORIZONTAL SCALE =
1"=100'
VERTICAL SCALE =
1"=20'



**CROSS-SECTION
15-15'
NORTH - SOUTH
THROUGH CENTER
OF ISFSI**

HORIZONTAL SCALE =
1"=200'
VERTICAL SCALE =
1"=25'



**CROSS-SECTION
16-16'
NORTH - SOUTH
THROUGH 345 Kv
AREA**

HORIZONTAL SCALE =
1"=200'
VERTICAL SCALE =
1"=20'



Maine Yankee		MAINE YANKEE RCRA CLOSURE - Bailey Point RFI Report	
DATE PREPARED: 09-02-03	DESIGNED BY: MOS	DRAWING TITLE: GEOLOGIC CROSS-SECTIONS	DRAWING NO.: 3-13F
PROJECT NAME/FILE NAME: BAILEY/CROSS-SECTION	DRAWN BY: BSB	CHECKED BY: RGG	PREPARED FOR: MAINE YANKEE ATOMIC POWER CO., WISCASSSET ME
PROJECT NUMBER/PHASE: MEPO2167/8A	SCALE: SHOWN		