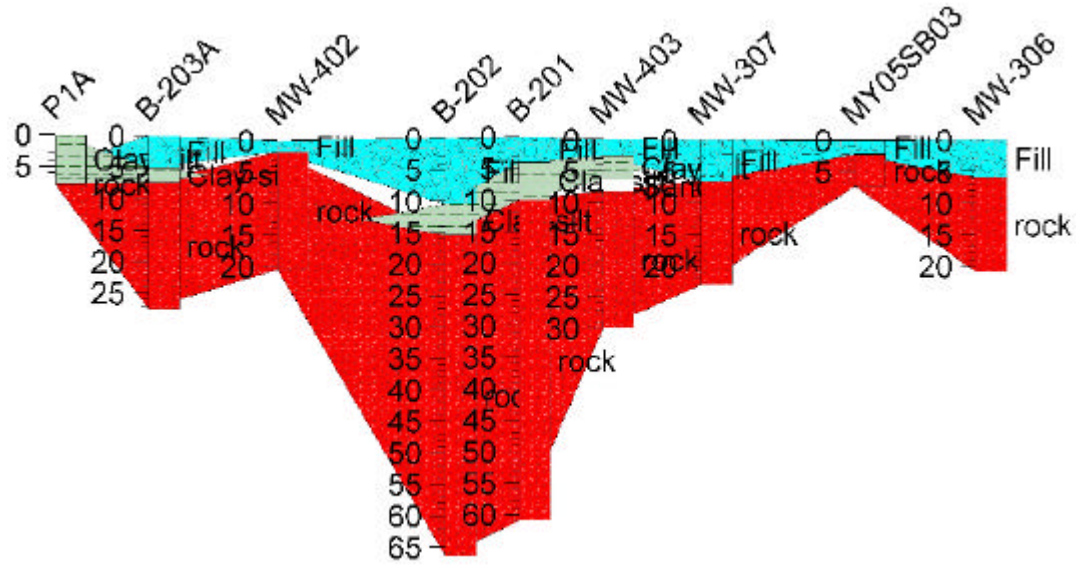


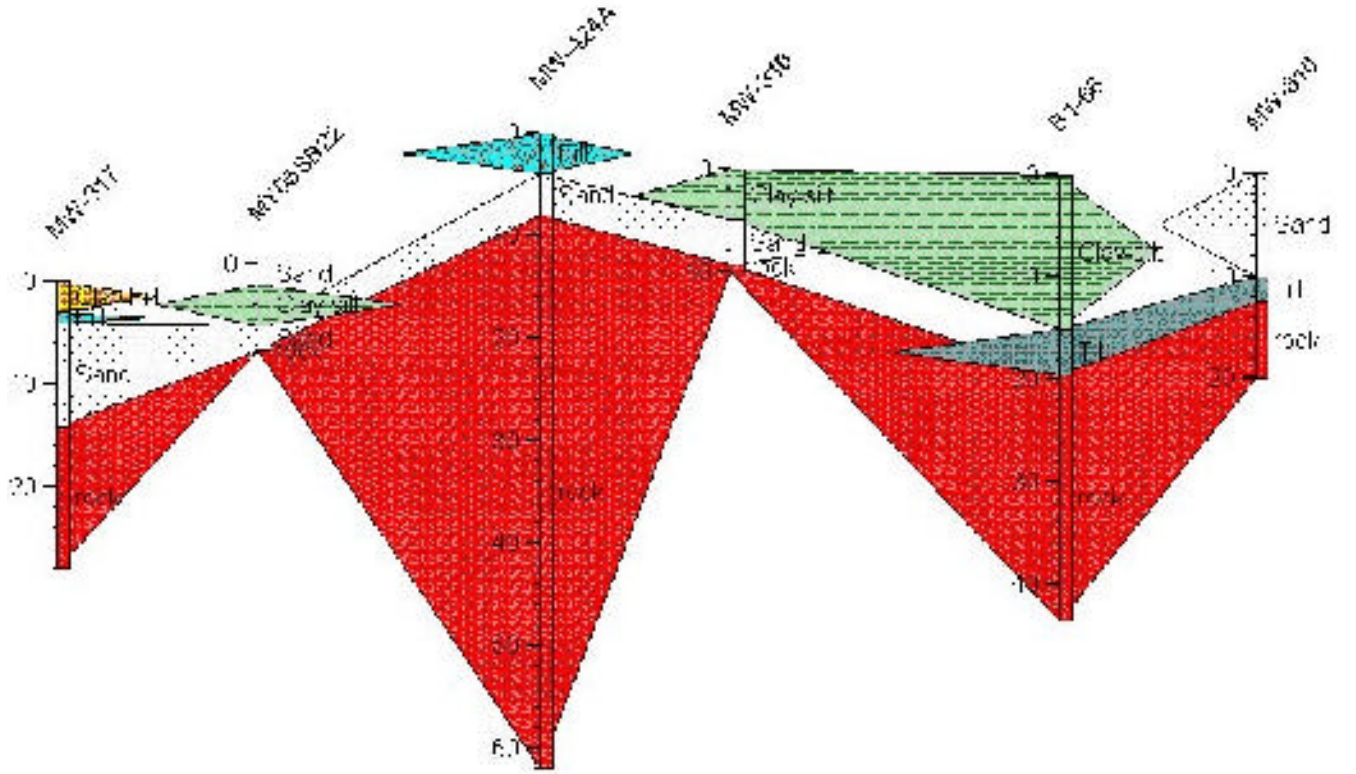
**CROSS-SECTION
11-11'
EAST - WEST
THROUGH SOUTH
END OF SITE**

HORIZONTAL SCALE =
1"=100'
VERTICAL SCALE =
1"=30'



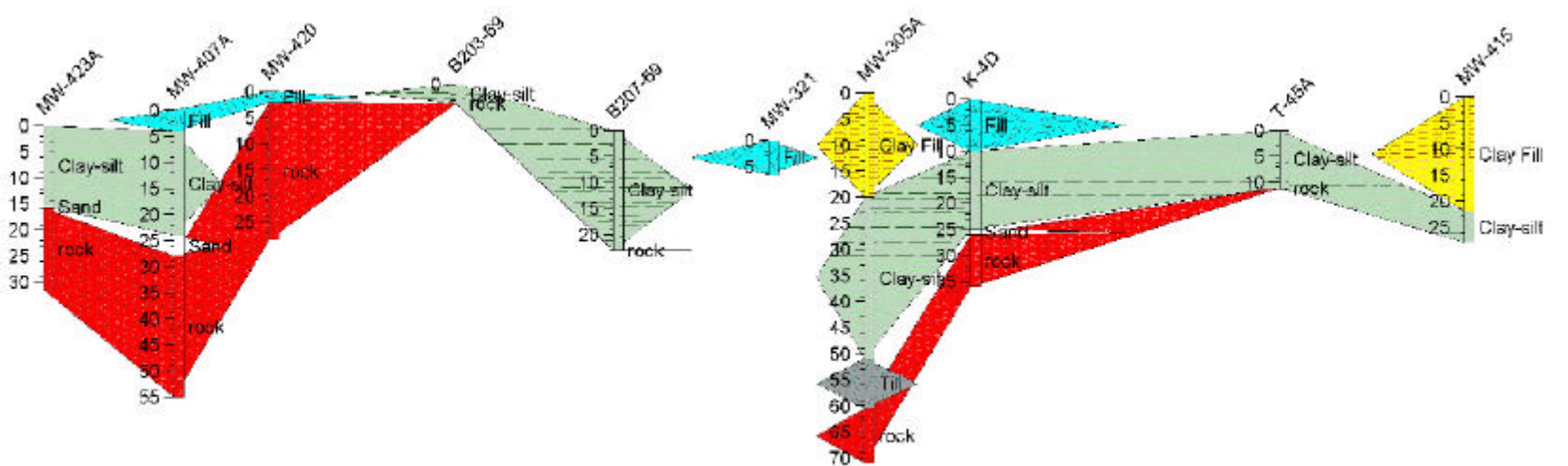
**CROSS-SECTION
12-12'
ALONG EAST SIDE
OF SITE**

HORIZONTAL SCALE =
1"=250'
VERTICAL SCALE =
1"=20'



**CROSS-SECTION
13-13'
THROUGH WEST
SIDE OF SITE**

HORIZONTAL SCALE =
1"=300'
VERTICAL SCALE =
1"=35'



These geologic cross sections are linear interpolations between data points, based on a variety of RCRA and historical borings and testpits. See the legend on Figure 3-3 for an explanation of the surficial units. For each data point, the ground surface is that which existed at the time of the exploration and may have changed since then. Numerous different investigators have prepared the historical exploration logs and the interpretation of the bedrock surface has generally been taken equal to the elevation of "refusal" where noted. Not all historical explorations were accurately surveyed. Large areas of the site have sparse density of exploration points. The bedrock surface has been found to vary widely over short distances. "Fill" material may contain a wide variety of materials. Therefore, this map should not be relied upon for the planning of construction activities.



Maine Yankee

MAINE YANKEE RCRA CLOSURE - Bailey Point RFI Report

DRAWINGS PRODUCED BY:	CH2MHILL STRATEX	DRAWING TITLE:	GEOLOGIC CROSS-SECTIONS
DATE PREPARED:	09-02-03	DESIGNED BY:	MOS
PROJECT NAME/FILE NAME:	BAILEY/CROSS-SECTION	DRAWN BY:	BSB
		CHECKED BY:	MOS
		REVIEWED BY:	RGG
		SCALE:	SHOWN
		PREPARED FOR:	MAINE YANKEE ATOMIC POWER CO. WISCASSETT ME
		FIGURE NO.:	3-13E