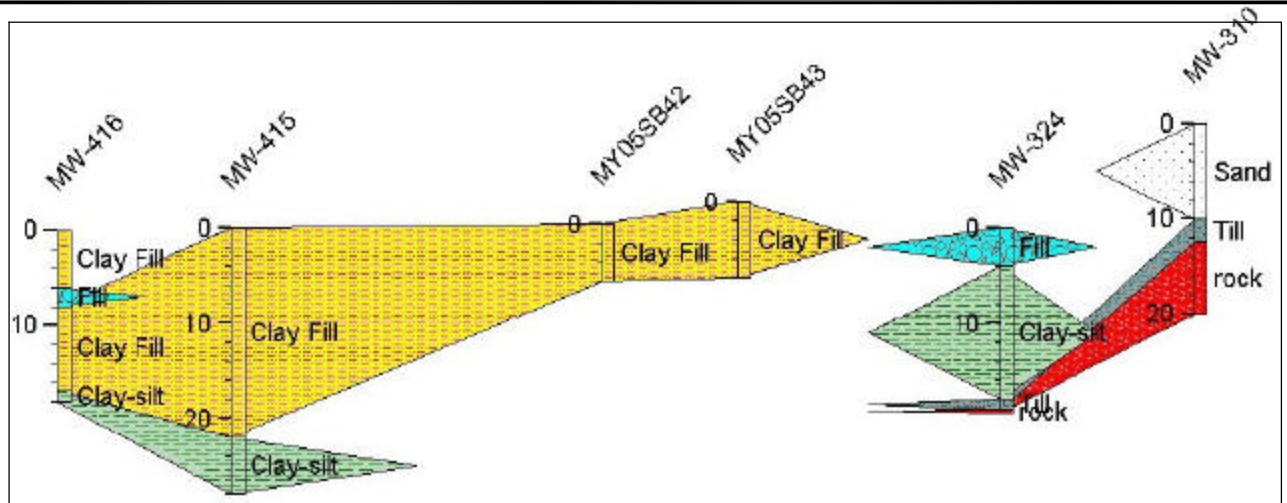


These geologic cross sections are linear interpolations between data points, based on a variety of RCRA and historical borings and testpits. See the legend on Figure 3-3 for an explanation of the surficial units. For each data point, the ground surface is that which existed at the time of the exploration and may have changed since then. Numerous different investigators have prepared the historical exploration logs and the interpretation of the bedrock surface has generally been taken equal to the elevation of "refusal" where noted. Not all historical explorations were accurately surveyed. Large areas of the site have sparse density of exploration points. The bedrock surface has been found to vary widely over short distances. "Fill" material may contain a wide variety of materials. Therefore, this map should not be relied upon for the planning of construction activities.

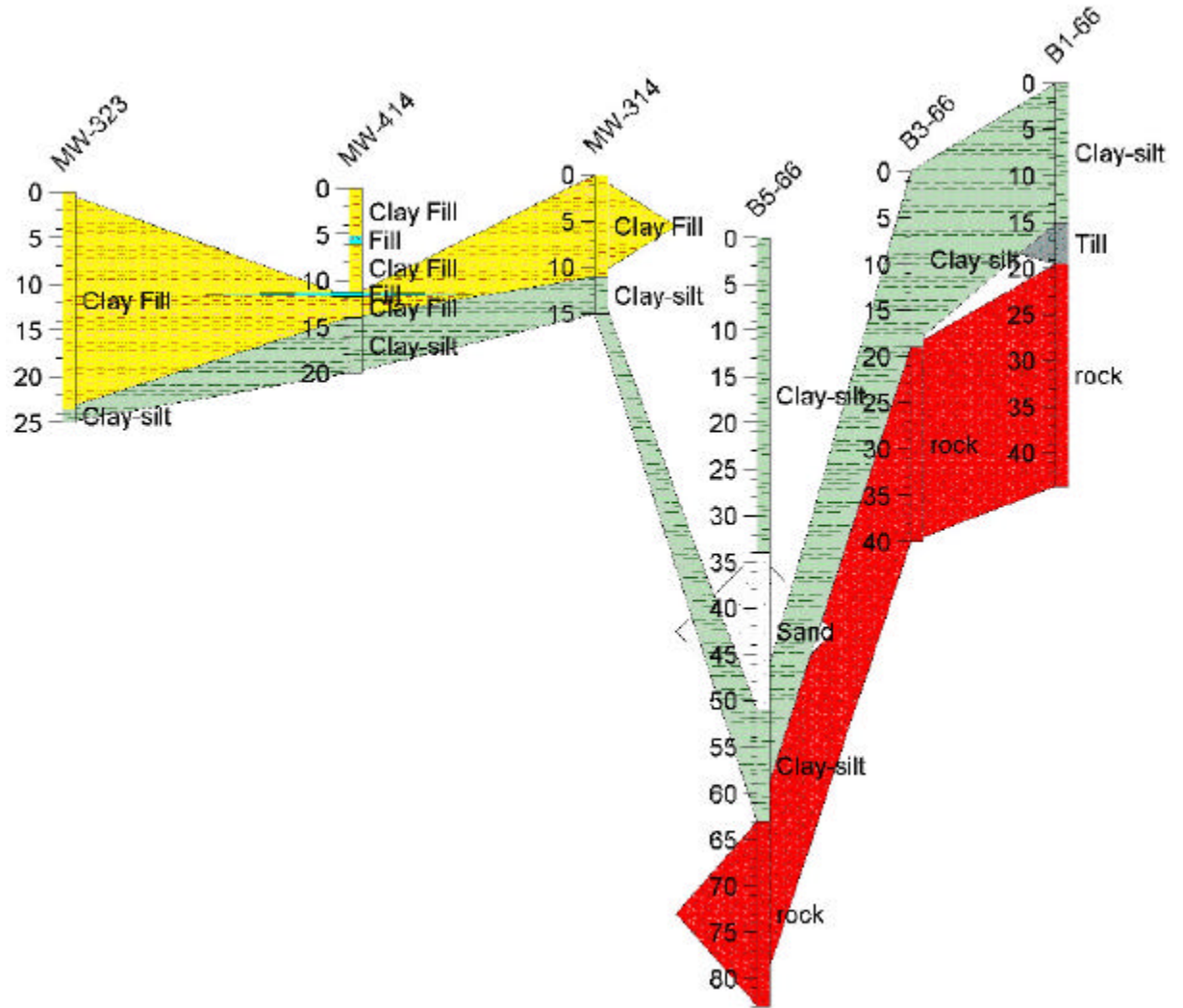
**CROSS-SECTION  
1-1'  
EAST - WEST  
AT NORTH END**

HORIZONTAL SCALE =  
1"=300'  
VERTICAL SCALE =  
1"=20'



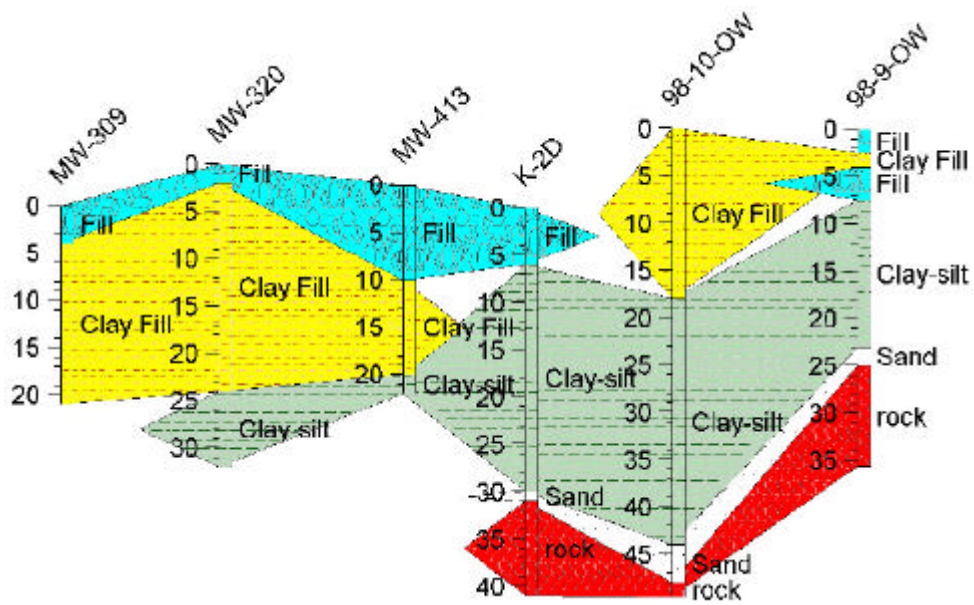
**CROSS-SECTION  
2-2'  
EAST - WEST  
THROUGH PRE-OP  
CLEANING BASIN**

HORIZONTAL SCALE =  
1"=300'  
VERTICAL SCALE =  
1"=20'



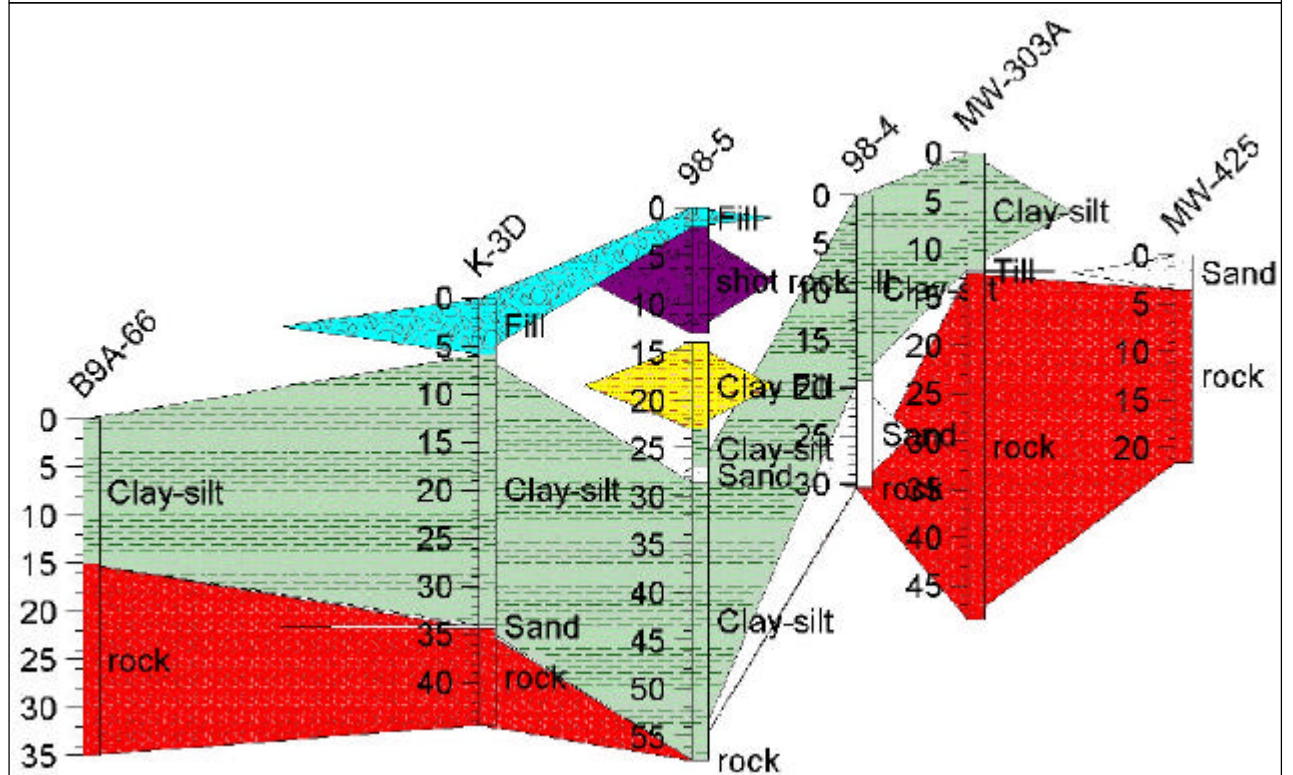
**CROSS-SECTION  
3-3'  
EAST - WEST  
NORTH END ISFSI**

HORIZONTAL SCALE =  
1"=300'  
VERTICAL SCALE =  
1"=20'



**CROSS-SECTION  
4-4'  
EAST - WEST  
MIDDLE ISFSI**

HORIZONTAL SCALE =  
1"=375'  
VERTICAL SCALE =  
1"=20'



**Maine Yankee**

**MAINE YANKEE RCRA CLOSURE - Bailey Point RFI Report**

DRAWINGS PRODUCED BY:		DRAWING TITLE:	
CH2MHILL STRATEX		GEOLOGIC CROSS-SECTIONS	
JACOUES WHITFORD COMPANY		FIGURE NO. 3-13B	
DATE PREPARED:	DESIGNED BY:	DRAWN BY:	CHECKED BY:
09-02-03	MOS	BSB	MOS
PROJECT NAME/FILE NAME:	PROJECT NUMBER/PHASE:	SCALE:	PREPARED FOR:
BAILEY/CROSS-SECTION	MEP02167/8A	1"=1000'	MAINE YANKEE ATOMIC POWER CO. WISCONSIN ME