

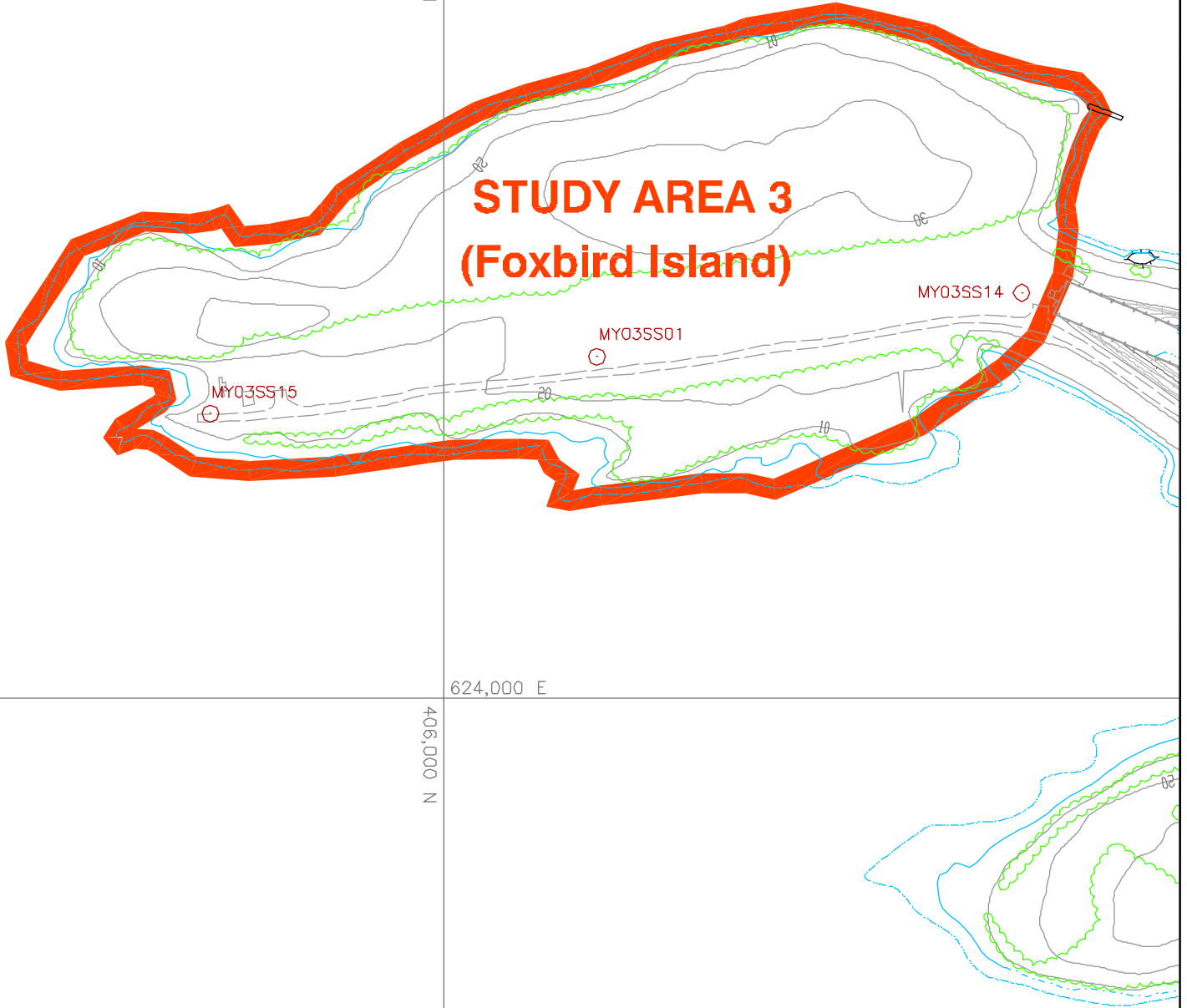
623,000 E

406,000 N

624,000 E

406,000 N

STUDY AREA 3 (Foxbird Island)



LEGEND:

- MY03SS15 SURFACE SOIL SAMPLE LOCATION
- STUDY AREA DESIGNATIONS



Maine Yankee

MAINE YANKEE RCRA CLOSURE - Bailey Point RFI Report



DRAWINGS PRODUCED BY:
CH2MHILL, STRATEX
JACQUES WHITFORD COMPANY

DRAWING TITLE:

STUDY AREA 3 (Foxbird Island)



DATE PREPARED: 09-02-03	DESIGNED BY: NOS	DRAWN BY: BSB	CHECKED BY: NOS	REVIEWED BY: RGG
PROJECT NAME/FILE NAME: BAILEY/3PRCRA		PROJECT NUMBER/PHASE: MEP02:6718A		SCALE: 1"=200'

PREPARED FOR:
MAINE YANKEE ATOMIC POWER CO, Wiscasset, ME

FIGURE NO. **2-5**